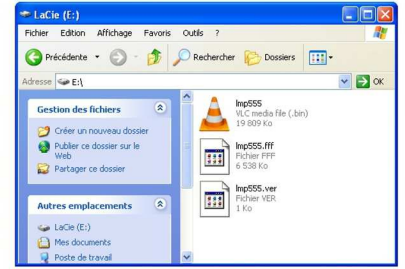


1

Copy the 3 firmware files you have downloaded on a USB drive (into the root folder).



LaCinema Mini HD



LaCinema Classic HD

2



Connect the USB drive and turn on the LaCinema. Wait few seconds for the automatic update notification and press the OK button.

3



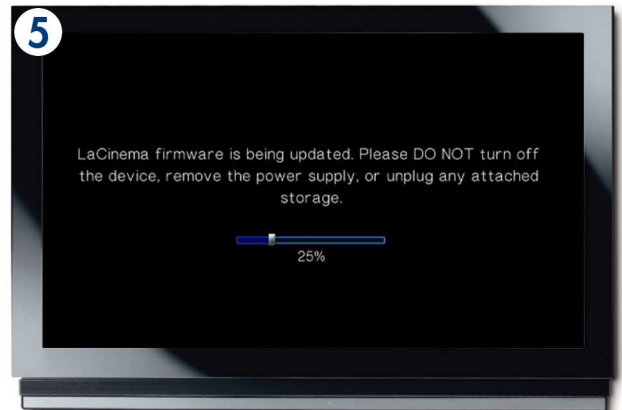
A confirmation message with update version details appears. Press "OK" to confirm.

4



Wait while your LaCinema is restarting...

5



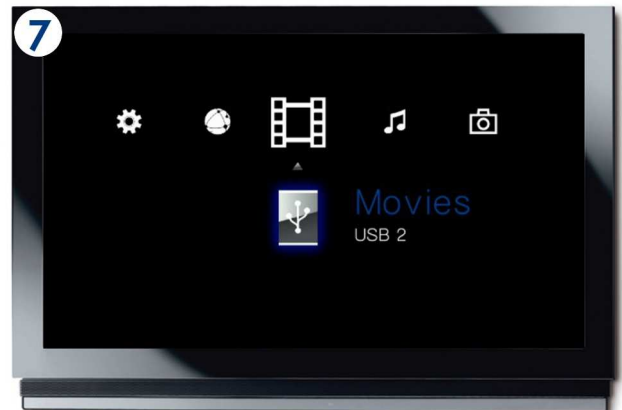
Your LaCinema is being updated.

6



Once the update is completed, your LaCinema will restart again.

7



You're done! Your LaCinema is up to date.